

UHP

Clean Pipe/Tube Fittings & Flanges



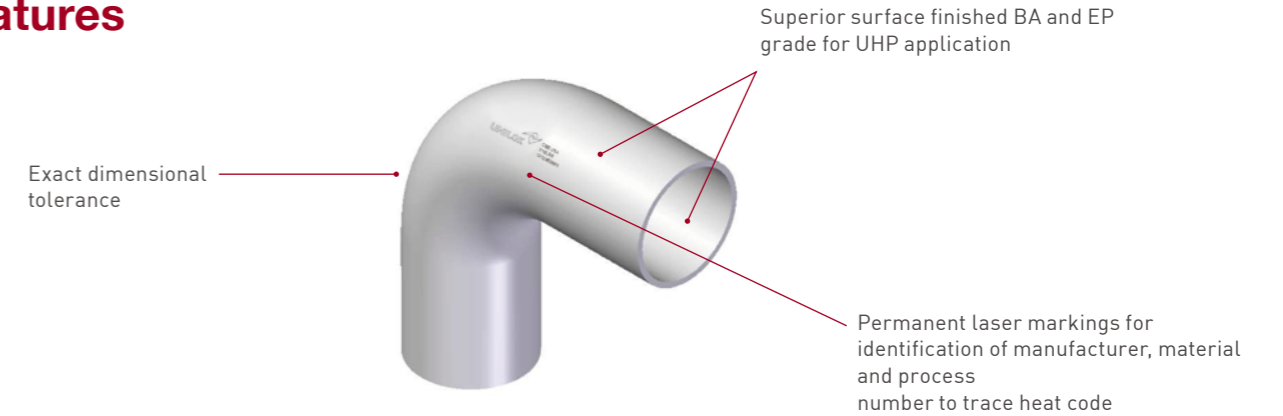
Clean Pipe/Tube Fittings & Flanges

CONTENTS

Features	283	Test	284
Pipe Size & Weld End Form	283	Cleaning & Packaging	284
Tube Size & Weld End Form	283	How To Order	284
Materials	284	Clean Pipe & Tube Fittings	285
Internal Surface Finish Levels	284	Clean Flanges	291

UNILOK® Clean Pipe/Tube fittings are designed and manufactured as high performance and high purity components by our own know-how to be accumulated throughout the years.

Features



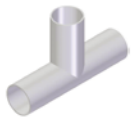
Clean Pipe & Tube Fittings



CBE ²⁷⁹
Elbow 90°



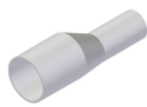
CBVE ²⁷⁹
Elbow 45°



CBT ²⁸⁰
Tee



CBTR ²⁸⁰
Reducing Tee



CBCR ²⁸¹
Concentric Reducer



CBCA ²⁸¹
Cap



CBCAR ²⁸¹
Cap Reducer



CBTJ ²⁸²
Joint Tee



CBRJ ²⁸²
Joint Reducer



CBCJ ²⁸³
Joint Cap



CBTM ²⁸⁴
Multi Header Tee



CBTMJ ²⁸⁴
Multi Header Joint Tee

Clean Flanges



CFL ²⁸⁵
Lab Joint Flange



CFJR ²⁸⁵
JIS RF Flange



CFP ²⁸⁵
Pipe Flange

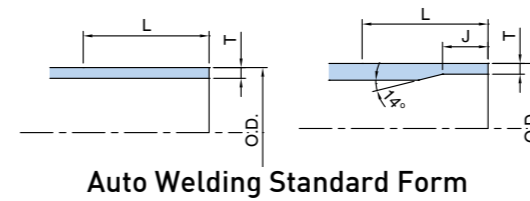


CFJB ²⁸⁵
JIS Blind Flange



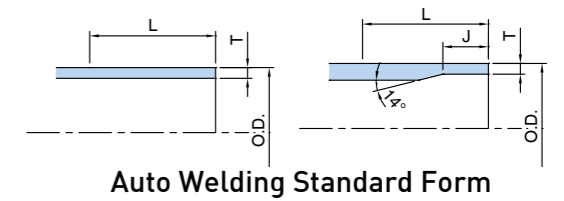
CFJG ²⁸⁶
JIS Flange Gasket

Pipe Size & Weld Bevel End Manufacture Form



Auto Welding Standard Form

Tube Size & Weld Bevel End Manufacture Form



Auto Welding Standard Form

Pipe Size O.D.		Wall Thickness T		Straight End Length L	Thinning Length J	
		5S	10S		5S	10S
Normal	mm	mm		mm	mm	
8A	13.80	1.20	1.65	29	4	7
10A	17.30	1.20	1.65	36	4	7
15A	21.70	1.65	2.10	36	5	7
20A	27.20	1.65	2.10	36	5	7
25A	34.00	1.65	2.80	36	5	7
32A	42.70	1.65	2.80	46	5	7
40A	48.60	1.65	2.80	46	5	7
50A	60.50	1.65	2.80	46	5	7
65A	76.30	2.10	3.00	51	6	11
80A	89.10	2.10	3.00	51	6	11
100A	114.30	2.10	3.00	51	6	11
125A	139.80	2.80	3.40	-	7	-
150A	165.20	2.80	3.40	-	7	-
200A	216.30	2.80	4.00	-	7	-
250A	267.40	3.40	4.00	-	-	-
300A	318.50	4.00	4.50	-	-	-
350A	355.60	4.00	4.80	-	-	-
400A	406.40	4.20	4.80	-	-	-

Pipe Size O.D.		Wall Thickness T	Straight End Length L	Thinning Length J
1/4	6.35	1.00(0.89)	29	7
3/8	9.53	1.00(0.89)	29	7
1/2	12.70	1.00(1.24/1.65)	29	7
5/8	15.88	1.00(1.24)	36	7
3/4	19.05	1.65(1.24)	36	7
1	25.40	1.65(1.24)	36	7
1 1/4	31.80	1.65	36	7
1 1/2	38.10	1.65	46	7
2	50.80	1.65	46	7
2 1/2	63.50	1.65	51	7
3	76.20	1.65	51	11
4	101.60	2.11	51	11
5	127.00	2.77(3.05)	56	11
6	152.40	2.77(3.05)	56	11

The tube wall thickness which are indicated in black colors are the standard. The red colored wall thicknesses are available upon request.

The pipe sizes larger than 100A are welded by manual welding. For more details, contact your local distributor.

Materials

	Materials	Specification
Pipe	304SS	JIS SUS304
	304LSS	JIS SUS304L
	316SS	JIS SUS316
	316LSS	JIS SUS316L
Tube	316LSS	ASTM A269 TP316/316L

Internal Surface Finish Levels

Grade	Size	Internal Surface Finish Level Ra (µinch)
BA	1/4" ≤ O.D. ≤ 1"	≤ 20
	25A ≤ O.D. ≤ 100A	≤ 25
EP	1/4" ≤ O.D. ≤ 80A	≤ 10
	O.D. ≥ 100A	

How To Order

UNILOK Clean Pipe & Tube Fittings are ordered by part number as shown below.



Example: The following part number, *CBE-25A S05-SLS-EP* is designated for 90° Elbow, 25A Pipe Size, 316LSS, EP.

Connection Size														
Fractional(Inch) Tube O.D. Designation														
Tube O.D.	inch	1/8	1/4	3/8	1/2	3/4	1	1 1/4	1 1/2	2	3	4	5	6
Designator		02	04	06	08	12	16	20	24	32	48	64	80	96

Connection Size																			
Tube O.D.	Normal	8A	10A	15A	20A	25A	32A	40A	50A	65A	80A	100A	125A	150A	200A	250A	300A	350A	400A
mm		13.8	17.3	21.7	27.2	34.0	42.7	48.6	60.5	76.3	89.1	114.3	139.8	165.2	216.3	267.4	318.5	355.6	406.4
Designator		8A	10A	15A	20A	25A	32A	40A	50A	65A	80A	100A	125A	150A	200A	250A	300A	350A	400A

Pipe and tube sizes larger than 100A and 2" are available upon request

Wall Thickness										
Normal or inch	Pipe		Tube							
	5S	10S	0.035	0.039	0.049	0.065	0.083	0.109	0.120	
mm	-	-	0.89	1.00	1.24	1.65	2.11	2.77	3.05	
Designator	S05	S10	T035	T100	T049	T065	T083	T109	T120	

Refer to sizes in page 283 for more details.

Particle Contribution Test

According to ASTM F1394-92.

Moisture Contribution Test

According to SEMA-90120397B-STD.

Cleaning

All components are precisely cleaned with 18MΩ deionized water after the passivation procedure. Reference specification : SEMI E49.6.

Assembling

According to SEMI E49.6.

Packaging

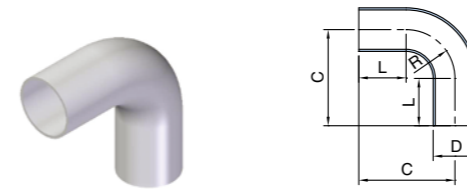
Each component is double bagged to ensure component cleanliness and to protect them from environmental contamination.

Referenced specification : SEMI E49.1.

Clean Pipe & Tube Fittings

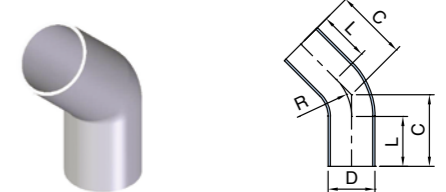
CBE

Elbow 90°



CBVE

Elbow 45°



Pipe Size - Long Radius

Part No.	Pipe O.D. D		Dimension (mm)		
	N.S.	mm	C	R	L
CBE-8A-	8A	13.80	55.0	25.4	29.0
CBE-10A-	10A	17.30	62.0	25.4	36.0
CBE-15A-	15A	21.70	75.0	38.1	36.0
CBE-20A-	20A	27.20	75.0	38.1	36.0
CBE-25A-	25A	34.00	75.0	38.1	36.0
CBE-32A-	32A	42.70	94.0	47.6	46.0
CBE-40A-	40A	48.60	104.0	57.2	46.0
CBE-50A-	50A	60.50	123.0	76.2	46.0
CBE-65A-	65A	76.30	147	95.3	51.0
CBE-80A-	80A	89.10	166	114.3	51.0
CBE-100A-	100A	114.30	204	152.4	51.0

Pipe Size - Long Radius

Part No.	Pipe O.D. D		Dimension (mm)		
	N.S.	mm	C	R	L
CBVE-20A-	20A	27.20	52.0	38.1	36.0
CBVE-25A-	25A	34.00	52.0	38.1	36.0
CBVE-32A-	32A	42.70	66.0	47.6	46.0
CBVE-40A-	40A	48.60	70.0	57.2	46.0
CBVE-50A-	50A	60.50	78.0	76.2	46.0
CBVE-65A-	65A	76.30	91.0	95.3	51.0
CBVE-80A-	80A	89.10	99.0	114.3	51.0
CBVE-100A-	100A	114.30	115.0	152.4	51.0

Tube Size - Long Radius

Part No.	Tube O.D. D		Dimension (mm)		
	inch	mm	C	R	L
CBE-04-	1/4	6.35	49.0	20.0	29.0
CBE-06-	3/8	9.52	52.0	23.0	29.0
CBE-08-	1/2	12.70	54.0	25.0	29.0
CBE-12-	3/4	19.05	66.0	30.0	36.0
CBE-16-	1	25.40	69.0	33.0	36.0
CBE-20-	1 1/4	31.80	84.0	47.6	36.0
CBE-24-	1 1/2	38.10	104.0	57.2	46.0
CBE-32-	2	50.80	123.0	76.2	46.0

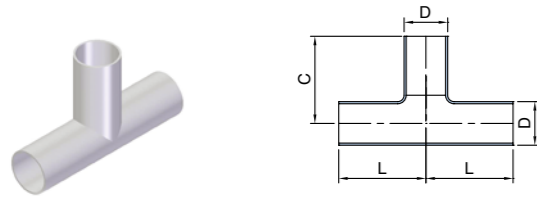
Tube Size - Long Radius

Part No.	Tube O.D. D		Dimension (mm)		
	inch	mm	C	R	L
CBVE-08-	1/2	12.70	40.0	25.0	29.0
CBVE-12-	3/4	19.05	49.0	30.0	36.0
CBVE-16-	1	25.40	50.0	33.0	36.0
CBVE-20-	1 1/4	31.80	56.0	47.6	36.0
CBVE-24-	1 1/2	38.10	70.0	57.2	46.0
CBVE-32-	2	50.80	78.0	76.2	46.0

Dimensions are for reference only and are subject to change without prior notice.

CBT

Tee



Pipe Size

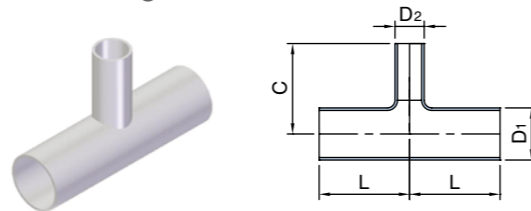
Part No.	Pipe O.D. D		Dimension (mm)	
	N.S.	mm	L	C
CBT-8A-	8A	13.80	42.0	42.0
CBT-10A-	10A	17.30	49.0	49.0
CBT-15A-	15A	21.70	59.0	59.0
CBT-20A-	20A	27.20	65.0	65.0
CBT-25A-	25A	34.00	68.0	68.0
CBT-32A-	32A	42.70	88.0	88.0
CBT-40A-	40A	48.60	95.0	95.0
CBT-50A-	50A	60.50	102.0	102.0
CBT-65A-	65A	76.30	121.0	121.0
CBT-80A-	80A	89.10	130.0	130.0
CBT-100A-	100A	114.30	145.0	145.0

Tube Size

Part No.	Tube O.D. D		Dimension (mm)	
	inch	mm	L	C
CBT-04-	1/4	6.35	35.0	35.0
CBT-06-	3/8	9.52	37.0	37.0
CBT-08-	1/2	12.70	39.0	39.0
CBT-12-	3/4	19.05	52.0	52.0
CBT-16-	1	25.40	55.0	55.0
CBT-20-	1 1/4	31.80	59.0	59.0
CBT-24-	1 1/2	38.10	74.0	74.0
CBT-32-	2	50.80	77.0	77.0

CBTR

Reducing Tee

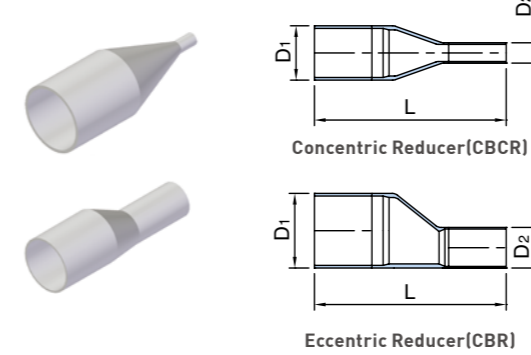


Pipe Size

Part No.	Pipe O.D. D								Dimension (mm)		
	D1	D2							L	C	
CBTR-8A-*-	8A	1/4"	3/8"	1/2"					42.0	42.0	
CBTR-10A-*-	10A	8A	1/4"	3/8"	1/2"				47.0	44.0	
CBTR-15A-*-	15A	8A	1/4"	3/8"	1/2"				47.0	44.0	
		10A		3/4"	5/8"				52.0	52.0	
CBTR-20A-*-	20A	8A	1/4"	3/8"	1/2"				47.0	47.0	
		10A	15A	3/4"	5/8"	1"			55.0	55.0	
CBTR-25A-*-	25A	8A	1/4"	3/8"	1/2"				47.0	50.0	
		10A	15A	20A	3/4"	5/8"	1"	1-1/4"	59.0	59.0	
CBTR-32A-*-	32A	8A	1/4"	3/8"	1/2"				57.0	54.0	
		10A	15A	20A	25A	3/4"	5/8"	1"	1-1/4"	68.0	62.0
CBTR-40A-*-	40A	8A	1/4"	3/8"	1/2"				57.0	57.0	
		10A	15A	20A	25A	3/4"	5/8"	1"	1-1/4"	68.0	65.0
		32A		1-1/2"					77.0	77.0	
CBTR-50A-*-	50A	8A	1/4"	3/8"	1/2"				57.0	63.0	
		10A	15A	20A	25A	3/4"	5/8"	1"	1-1/4"	68.0	71.0
		32A	40A	1-1/2"	2"				83.0	83.0	
CBTR-65A-*-	65A	8A	1/4"	3/8"	1/2"				61.0	71.0	
		10A	15A	20A	25A	3/4"	5/8"	1"	1-1/4"	72.0	79.0
		32A	40A	50A	1-1/2"	2"			88.0	90.0	
CBTR-80A-*-	80A	8A	1/4"	3/8"	1/2"				61.0	77.0	
		10A	15A	20A	25A	3/4"	5/8"	1"	1-1/4"	72.0	85.0
		32A	40A	50A	1-1/2"	2"			88.0	96.0	
		65A							103.0	103.0	
CBTR-100A-*-	100A	8A	1/4"	3/8"	1/2"				61.0	90.0	
		10A	15A	20A	25A	3/4"	5/8"	1"	1-1/4"	72.0	98.0
		32A	40A	50A	1-1/2"	2"			88.0	109.0	
		65A	80A						116.0	116.0	

CBCR

Concentric Reducer



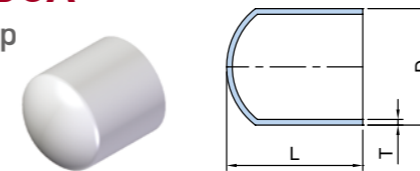
Pipe Size

Part No.	Pipe O.D.					Dimension (mm)
	D1	D2				L
CBCR-20A-*-	20A	15A				105.0
CBCR-25A-*-	25A	15A	20A	3/8"	1/2"	120.0
CBCR-32A-*-	32A	15A	20A	25A	1/2"	125.0
CBCR-40A-*-	40A	20A	25A	32A	1/2"	130.0
CBCR-50A-*-	50A	25A	32A	40A	1/2"	140.0
CBCR-65A-*-	65A	32A	40A	50A	1/2"	165.0
CBCR-80A-*-	80A	40A	50A	65A	1/2"	170.0
CBCR-100A-*-	100A	50A	65A	80A	1/2"	180.0

Order to eccentric reducer, replace **C** with **E**
 Examples : CBER-25AS05-20AS05-SLS-EP

CBCA

Cap

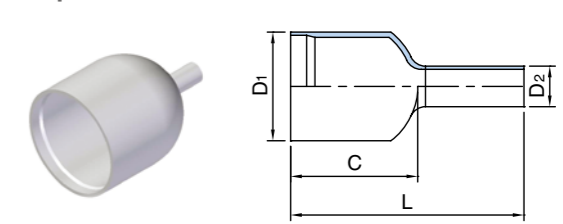


Pipe Size

Part No.	Pipe O.D. D		Dimension (mm)	
	N.S.	mm	L	T (S05)
CBCA-8A-	8A	13.80	12.7	1.20
CBCA-10A-	10A	17.30	19.1	1.20
CBCA-15A-	15A	21.70	25.4	1.65
CBCA-20A-	20A	27.20	25.4	1.65
CBCA-25A-	25A	34.00	38.1	1.65
CBCA-32A-	32A	42.70	38.1	1.65
CBCA-40A-	40A	48.60	38.1	1.65
CBCA-50A-	50A	60.50	38.1	1.65
CBCA-65A-	65A	76.30	38.1	2.10
CBCA-80A-	80A	89.10	50.8	2.10
CBCA-100A-	100A	114.30	63.5	2.10

CBCAR

Cap Reducer



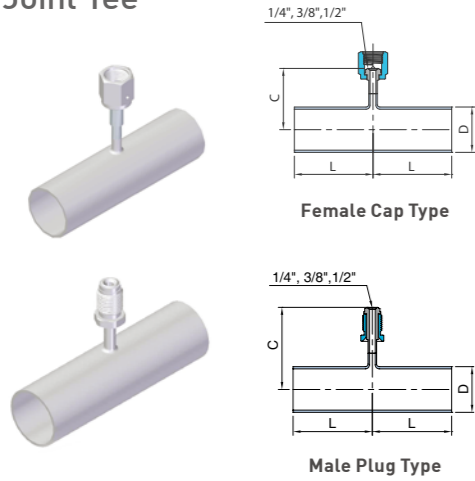
Pipe Size

Part No.	Pipe O.D. D								Dimension (mm)		
	D1	D2							L	C	
CBCAR-8A-*-	8A	1/4"	3/8"	1/2"					-	-	
CBCAR-10A-*-	10A	8A	1/4"	3/8"	1/2"				-	-	
CBCAR-15A-*-	15A	8A	1/4"	3/8"	1/2"				60.0	25.4	
		10A		3/4"	5/8"				[67.0]		
CBCAR-20A-*-	20A	8A	1/4"	3/8"	1/2"				60.0	25.4	
		10A	15A	3/4"	5/8"	1"			67.0		
CBCAR-25A-*-	25A	8A	1/4"	3/8"	1/2"				73.0	38.1	
		10A	15A	20A	3/4"	5/8"	1"	1-1/4"	[80.0]		
CBCAR-32A-*-	32A	8A	1/4"	3/8"	1/2"				73.0	38.1	
		10A	15A	20A	25A	3/4"	5/8"	1"	1-1/4"		80.0
CBCAR-40A-*-	40A	8A	1/4"	3/8"	1/2"				73.0	38.1	
		10A	15A	20A	25A	3/4"	5/8"	1"	1-1/4"		80.0
		32A	40A	1-1/2"					[90.0]		
CBCAR-50A-*-	50A	8A	1/4"	3/8"	1/2"				73.0	38.1	
		10A	15A	20A	25A	3/4"	5/8"	1"	1-1/4"		80.0
		32A	40A	1-1/2"	2"				[90.0]		
CBCAR-65A-*-	65A	8A	1/4"	3/8"	1/2"				73.0	38.1	
		10A	15A	20A	25A	3/4"	5/8"	1"	1-1/4"		80.0
		32A	40A	50A	1-1/2"	2"			[90.0]		
CBCAR-80A-*-	80A	8A	1/4"	3/8"	1/2"				85.0	50.8	
		10A	15A	20A	25A	3/4"	5/8"	1"	1-1/4"		92.0
		32A	40A	50A	1-1/2"	2"			102.0		
		65A							[110.0]		
CBCAR-100A-*-	100A	8A	1/4"	3/8"	1/2"				98.0	63.5	
		10A	15A	20A	25A	3/4"	5/8"	1"	1-1/4"		105.0
		32A	40A	50A	1-1/2"	2"			115.0		
		65A	80A						125.0		

Dimensions are for reference only and are subject to change without prior notice.

Dimensions are for reference only and are subject to change without prior notice.

CBTJ Joint Tee



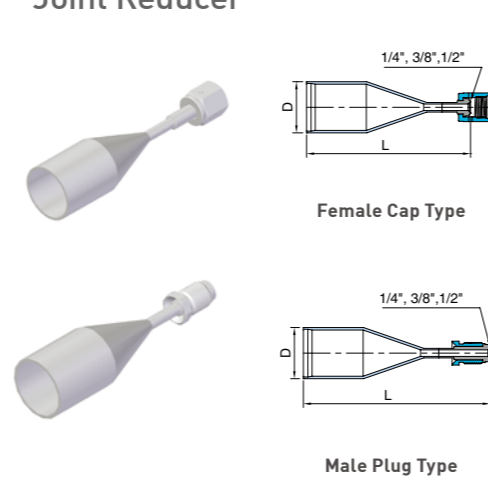
Pipe Size

Part No.	Pipe O.D. D		Dimension (mm)		
	N.S.	mm	L	Female C	Male C
CBTJ-10A-	10A	17.30	52.0	37.0	47.0
CBTJ-15A-	15A	21.70	52.0	39.5	49.5
CBTJ-20A-	20A	27.20	55.0	42.5	52.5
CBTJ-25A-	25A	34.00	59.0	46.5	56.5
CBTJ-32A-	32A	42.70	68.0	51.0	61.0
CBTJ-40A-	40A	48.60	68.0	54.0	64.0
CBTJ-50A-	50A	60.50	68.0	60.0	70.0
CBTJ-65A-	65A	76.30	72.0	68.0	78.0
CBTJ-80A-	80A	89.10	72.0	74.5	84.5
CBTJ-100A-	100A	114.30	72.0	87.0	97.0

Tube Size

Part No.	Tube O.D. D		Dimension (mm)		
	inch	mm	L	Female C	Male C
CBTJ-08-	1/2	12.70	45.0	35.0	45.0
CBTJ-12-	3/4	19.05	52.0	38.0	48.0
CBTJ-16-	1	25.40	55.0	42.0	52.0
CBTJ-20-	1 1/4	31.80	59.0	45.5	55.5
CBTJ-24-	1 1/2	38.10	68.0	48.0	58.0
CBTJ-32-	2	50.80	68.0	55.0	65.0

CBRJ Joint Reducer



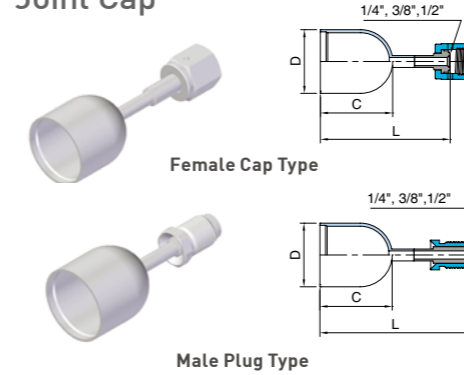
Pipe Size

Part No.	Pipe O.D. D		Dimension (mm)	
	N.S.	mm	Female L	Male L
CBRJ-10A-	10A	17.30	100.0	110.0
CBRJ-15A-	15A	21.70	110.0	120.0
CBRJ-20A-	20A	27.20	115.0	125.0
CBRJ-25A-	25A	34.00	130.0	140.0

Tube Size

Part No.	Tube O.D. D		Dimension (mm)	
	inch	mm	Female L	Male L
CBRJ-08-	1/2	12.70	85.0	95.0
CBRJ-12-	3/4	19.05	110.0	120.0
CBRJ-16-	1	25.40	115.0	125.0

CBCJ Joint Cap



Pipe Size

Part No.	Pipe O.D. D		Dimension (mm)		
	N.S.	mm	C	Female L	Male L
CBCJ-10A-	10A	17.30	19.1	48.0	58.0
CBCJ-15A-	15A	21.70	25.4	55.0	65.0
CBCJ-20A-	20A	27.20	25.4	55.0	65.0
CBCJ-25A-	25A	34.00	38.1	68.0	78.0
CBCJ-32A-	32A	42.70	38.1	68.0	78.0
CBCJ-40A-	40A	48.60	38.1	68.0	78.0
CBCJ-50A-	50A	60.50	38.1	68.0	78.0
CBCJ-65A-	65A	76.30	38.1	68.0	78.0
CBCJ-80A-	80A	89.10	50.8	81.0	91.0
CBCJ-100A-	100A	114.30	63.5	94.0	104.0

Tube Size

Part No.	Tube O.D. D		Dimension (mm)		
	inch	mm	C	Female L	Male L
CBCJ-12-	3/4	19.05	19.1	48.0	58.0
CBCJ-16-	1	25.40	25.4	55.0	65.0
CBCJ-20-	1 1/4	31.80	38.1	68.0	78.0
CBCJ-24-	1 1/2	38.10	38.1	68.0	78.0
CBCJ-32-	2	50.80	38.1	68.0	78.0

Joint Fittings Ordering Information

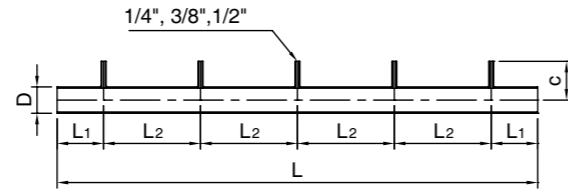
Every joint fittings are available with 1/4", 3/8" and 1/2" of UNILOK UCR Cap or UCR Plug.

To order, add the designators next to part number.

Example : CBCJ-25AS05-04CP

Designator	Joint Type
-04CP	1/4" UCR Female Cap
-06CP	3/8" UCR Female Cap
-08CP	1/2" UCR Female Cap
-04PG	1/4" UCR Male Plug
-06PG	3/8" UCR Male Plug
-08PG	1/2" UCR Male Plug

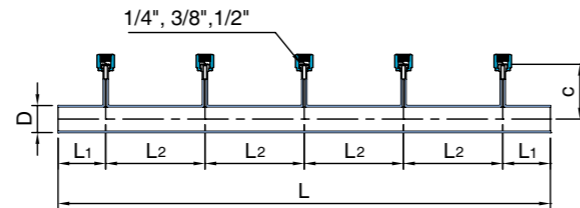
CBTM Multi Header Tee



Pipe Size

Part No.	Pipe O.D. D		Dimension (mm)						
	N.S.	mm	L				L ₁	L ₂	Tube-End C
			Number of Branches						
			2	3	4	5			
CBTM-10A-	10A	17.30	245.0	370.0	495.0	620.0	60.0	125.0	44.0
CBTM-15A-	15A	21.70							44.0
CBTM-20A-	20A	27.20							47.0
CBTM-25A-	25A	34.00							50.0
CBTM-32A-	32A	42.70							54.0
CBTM-40A-	40A	48.60							57.0
CBTM-50A-	50A	60.50							63.0
CBTM-65A-	65A	76.30	285.0	430.0	575.0	720.0	70.0	145.0	71.0
CBTM-80A-	80A	89.10							77.0
CBTM-100A-	100A	114.30							90.0

CBTMJ Multi Header Joint Tee



Pipe Size

Part No.	Pipe O.D. D		Dimension (mm)						
	N.S.	mm	L				L ₁	L ₂	Female C
			Number of Branches						
			2	3	4	5			
CBTMJ-10A-	10A	17.30	308.0	433.0	558.0	683.0	29.0	125.0	37.0
CBTMJ-15A-	15A	21.70	312.0	437.0	562.0	687.0	31.0		39.5
CBTMJ-20A-	20A	27.20	318.0	443.0	568.0	693.0	34.0		42.5
CBTMJ-25A-	25A	34.00	334.0	459.0	584.0	709.0	42.0		46.5
CBTMJ-32A-	32A	42.70	342.0	467.0	592.0	717.0	46.0		51.0
CBTMJ-40A-	40A	48.60	348.0	473.0	598.0	723.0	49.0		54.0
CBTMJ-50A-	50A	60.50	370.0	495.0	620.0	745.0	60.0		60.0
CBTMJ-65A-	65A	76.30	426.0	571.0	716.0	861.0	68.0	145.0	68.0
CBTMJ-80A-	80A	89.10	439.0	584.0	729.0	874.0	74.5		74.5
CBTMJ-100A-	100A	114.30	460.0	605.0	750.0	895.0	85.0		87.0

Multi Header Tee, Multi Header Joint Tee Ordering Information

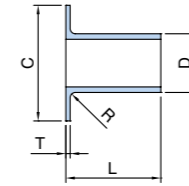
To order, add -branches size and -number of branches.

Example : CBTM-25AS05-04T-5

Dimensions are for reference only and are subject to change without prior notice.

Clean Flanges

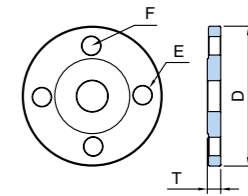
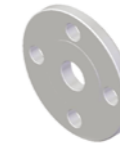
CFL Lab Joint Flange



Pipe Size

Part No.	Pipe O.D. D		Dimension (mm)				
	N.S.	mm	L	JIS 10K		JIS 5K	T
				C			
				(R)			
CFL-10A-	10A	17.3	55.0	46.0	39.0	3.0	2.5
CFL-15A-	15A	21.7	55.0	51.0	44.0	3.0	2.5
CFL-20A-	20A	27.2	55.0	56.0	49.0	3.0	2.5
CFL-25A-	25A	34.0	55.0	67.0	59.0	3.0	2.5
CFL-32A-	32A	42.7	70.0	76.0	70.0	3.0	2.5
CFL-40A-	40A	48.6	70.0	81.0	75.0	3.0	2.5
CFL-50A-	50A	60.5	70.0	96.0	85.0	4.0	2.5
CFL-65A-	65A	76.3	75.0	116.0	110.0	4.0	2.5
CFL-80A-	80A	89.1	75.0	126.0	121.0	5.0	2.5
CFL-100A-	100A	114.3	75.0	151.0	141.0	5.0	2.5

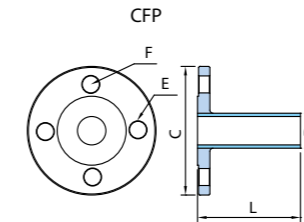
CFJR JIS RF Flange



Pipe Size

Part No.	Pipe O.D. D			Dimension (mm)					
	JIS	5K		5K			10K		
		mm	mm	E	F	T	E	F	T
CFJR-10A-	10A	75	90	M10	4.0	9.0	M12	4.0	12.0
CFJR-15A-	15A	80	95	M10	4.0	9.0	M12	4.0	12.0
CFJR-20A-	20A	85	100	M10	4.0	10.0	M12	4.0	14.0
CFJR-25A-	25A	95	125	M10	4.0	10.0	M16	4.0	14.0
CFJR-32A-	32A	115	135	M12	4.0	12.0	M16	4.0	16.0
CFJR-40A-	40A	120	140	M12	4.0	12.0	M16	4.0	16.0
CFJR-50A-	50A	130	155	M12	4.0	14.0	M16	4.0	16.0
CFJR-65A-	65A	155	175	M12	4.0	14.0	M16	4.0	18.0
CFJR-80A-	80A	180	185	M16	4.0	14.0	M16	8.0	18.0
CFJR-100A-	100A	200	210	M16	8.0	16.0	M16	8.0	18.0

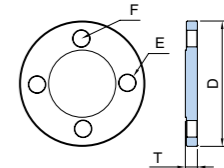
CFP Pipe Flange



Pipe Size

Part No.	Pipe O.D. D		Dimension (mm) <10K>			
	N.S.	mm	L	C	E	F
CFP-10A-	10A	17.3	100.0	90.0	M12	4.0
CFP-15A-	15A	21.7	100.0	95.0	M12	4.0
CFP-20A-	20A	27.2	100.0	100.0	M12	4.0
CFP-25A-	25A	34.0	100.0	125.0	M16	4.0
CFP-32A-	32A	42.7	100.0	135.0	M16	4.0
CFP-40A-	40A	48.6	100.0	140.0	M16	4.0
CFP-50A-	50A	60.5	100.0	155.0	M16	4.0
CFP-65A-	65A	76.3	100.0	175.0	M16	4.0
CFP-80A-	80A	89.1	100.0	185.0	M16	8
CFP-100A-	100A	114.3	100.0	210.0	M16	8

CFJB JIS Blind Flange



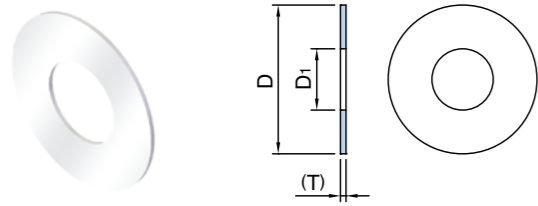
Pipe Size

Part No.	Pipe O.D. D			Dimension (mm)					
	JIS	5K		5K			10K		
		mm	mm	E	F	T	E	F	T
CFJB-10A-	10A	75	90	M10	4.0	9.0	M12	4.0	12.0
CFJB-15A-	15A	80	95	M10	4.0	9.0	M12	4.0	12.0
CFJB-20A-	20A	85	100	M10	4.0	10.0	M12	4.0	14.0
CFJB-25A-	25A	95	125	M10	4.0	10.0	M16	4.0	14.0
CFJB-32A-	32A	115	135	M12	4.0	12.0	M16	4.0	16.0
CFJB-40A-	40A	120	140	M12	4.0	12.0	M16	4.0	16.0
CFJB-50A-	50A	130	155	M12	4.0	14.0	M16	4.0	16.0
CFJB-65A-	65A	155	175	M12	4.0	14.0	M16	4.0	18.0
CFJB-80A-	80A	180	185	M16	4.0	14.0	M16	8.0	18.0
CFJB-100A-	100A	200	210	M16	8.0	16.0	M16	8.0	18.0

Dimensions are for reference only and are subject to change without prior notice.

CFJG

JIS Flange Gasket - PTFE



Pipe Size

Part No.	Pipe O.D. D			Dimension (mm)	
	JIS	5K	10K	D ₁	(T)
		mm	mm		
CFJG-10A-	10A	45	53	18	2
CFJG-15A-	15A	50	58	22	2
CFJG-20A-	20A	55	63	28	2
CFJG-25A-	25A	65	74	35	2
CFJG-32A-	32A	78	84	43	2
CFJG-40A-	40A	83	89	49	2
CFJG-50A-	50A	93	104	61	2
CFJG-65A-	65A	118	124	77	2
CFJG-80A-	80A	129	134	90	2
CFJG-100A-	100A	149	159	115	2

JIS Flange Ordering Information

Part Number - Pressure Rating-

Example : CFJR-32AS05-5K

Dimensions are for reference only and are subject to change without prior notice.